



Converters / SDI

HDMI to SDI Converter

SDI

Extenders

Converters

Splitters

Matrix switchers

Optic fibers



HSC

OPHIT's HSC is perfect solution for converting HDMI signal to SDI signal.

It enables HDMI compliant device to be connected to display with SDI input. It can also split one HDMI signal to two SDI signal at the same time.

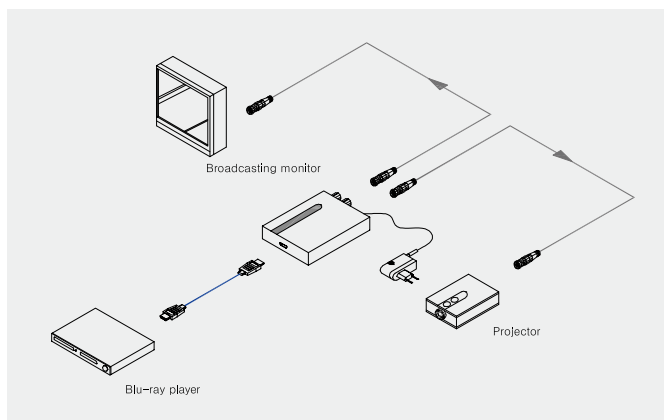
Feature

- Converts HDMI signal to SDI signal
- Input : 1 x HDMI / Output : 2 x SDI
- Compliant with HDMI1.3, HDCP1.1 and DVI1.1 standards
- Serial digital video transmitter for HD video :
 - SD 480i @ 60Hz
 - HD 720p @ 50, 60Hz
 - HD 1080i @ 50, 60Hz
 - HD 1080p @ 24, 25, 30, 50 and 60Hz
- Support two SDI output for cascade
- LED indicator for power and signal detection monitoring

Specification

Input port	TMDS
HDMI Input Signal	480i, 720p, 1080i, 1080p
Output port	SD/HD-SDI
SDI Output Signal	SMPTE 259M-C (270Mbps)
	SMPTE 292M (1.485, 1.485/1.001Gbps)
	SMPTE 424M (2.970, 2.970/1.001Gbps)
Connector	
Input	HDMI A type (Female)
Output	75Ω BNC (Female) x 2
Power	DC-JACK 2.1 pie
General	
Dimensions	100W x 85D x 25H (mm)
Weight	250g
Power	100 ~ 240V with DC 12V, 1A
Power consumption	2.4W(Max)

Application



Package

- HSC
- Power Adapter
- User's manual

Ordering Information

HSC

Model name

